



# MODEL "F" FALLGUARD® SAFETY SKYLIGHT SCREEN INSTALLATION INSTRUCTION

**WARNING: DO NOT PLACE BODYWEIGHT ON SKYLIGHT DURING INSTALLATION. USE EXTREME CAUTION WHEN INSTALLING THE FALLGUARD® SKYLIGHT SCREENS.**

## INSTALLATION PROCEDURE:

1. POSITION THE SCREEN ATTACHMENT CHANNEL SO THAT EQUAL AMOUNTS OF CHANNEL EXTEND PAST EACH END OF THE FIBERGLASS PANEL OPENING LENGTH AND ATTACH WITH SELF-DRILLING SCREWS (3) PER END (FIGURE 1).
2. LAY CHANNEL ON THE CENTER MOST RIDGE AND DETERMINE DRILL HOLE POSITIONS. APPLY SEALANT TAPE PATCH TO THE AREA OF METAL ROOF PANEL INTO WHICH THE SELF-DRILLING SCREWS WILL PENETRATE (FIGURE 1).
3. POSITION SKYLIGHT SCREEN OVER FIBERGLASS PANEL AND INTO ATTACHMENT TABS SO THAT EQUAL AMOUNTS OF SCREEN EXTEND PASS BOTH ENDS AND SIDES OF THE FIBERGLASS PANEL OPENING (FIGURE 2).
4. BEND THE ATTACHMENT TABS ON THE CHANNEL DOWN TO SECURE THE SKYLIGHT SCREEN IN PLACE OVER THE OPENING (FIGURE 3).

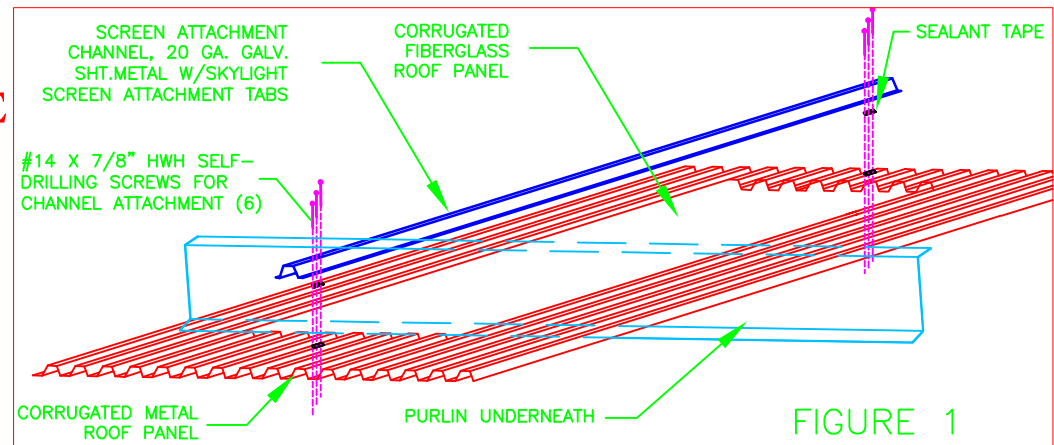


FIGURE 1

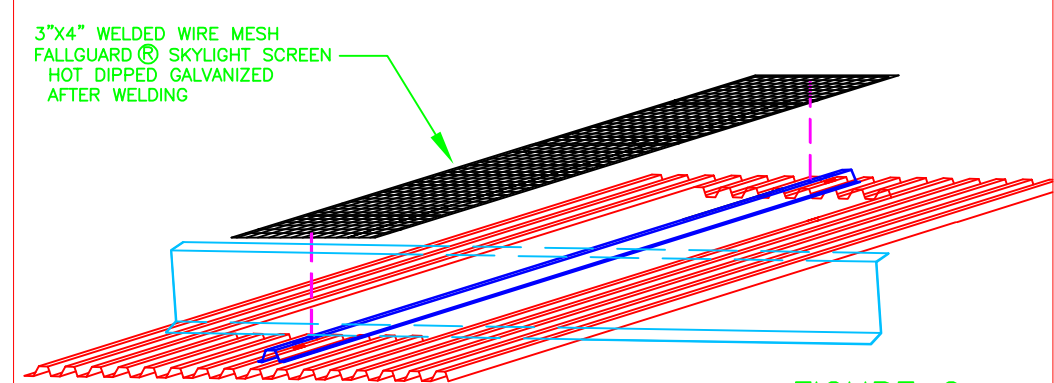


FIGURE 2

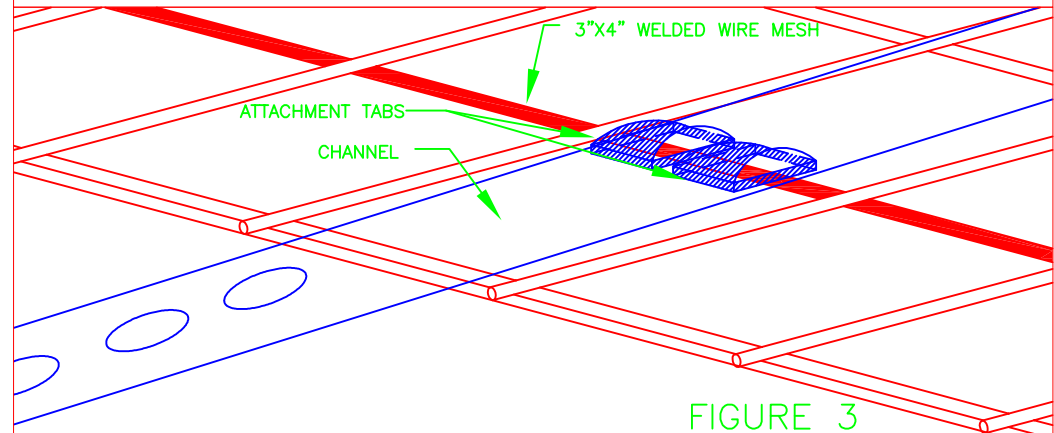


FIGURE 3